

Effects of the projects funded by The Global Fund over organizations of PLHA

(Partial findings of the Global HIV/AIDS Initiatives Network's Peru-based study)

Lessons Learned from the Implementation of the GFATM-supported HIV/AIDS Project in Peru: Effects on the Health Sector, Civil Society and Affected Communities

Presented by Clara Sandoval

Authors: Roberto López, Clara Sandoval, Alejandro Chirinos and Carlos Cáceres)



**ALLIANCE FOR HEALTH POLICY
AND SYSTEMS RESEARCH**



The GHIN Study in Peru

- Alliance for Policy Research and Health Systems called for proposals for study in 2005
- Since March 2006 is part of the GHIN (Global HIV/AIDS Initiatives Network)
- Potential usefulness to 3 levels:
 - Analyze the GHI (Global Health Initiatives) model of cooperation for the development of health systems
 - Feedback to the GHI
 - Feedback to the country (national response)

Introduction

- Peru: GF has funded 3 proposals on HIV/AIDS to be implemented between 2003 and 2011, approximately US\$ 76 million.
- Very significant investment in HIV/AIDS in the country.
- They are having a relevant impact on the interrelationship among the actors involved in the AIDS response, redistribution of public resources and quality of care offered to PLHA.

Aims of the study (1st phase)

- 1) Identify the effects that the GF projects has on organizations involved in Peruvian HIV/AIDS response, and the interactions between those organizations in the decision-making processes in relation to HIV/AIDS
- 2) Explore the potential effects of the GF projects in the structure and functioning of the Ministry of Health.
- 3) Assess the impact over the sources and policies of financing of the national response to the AIDS epidemic
- 4) Assess equity regarding access to the benefits of GF projects and the impact on stigma and discrimination affecting PLHA and vulnerable.

Methods

Objective 1:

- **Primary sources:** Deep interviews with actors related to HIV/AIDS national response (Ministry of health; NGOs, Principal Receptor, sub recipients, PLHA's organizations, CCM)
- **Secondary sources:** Review of previous studies and document analysis

Specific objective

Identify the effects of the GF Projects on the organizations of PLWHA

Hypothesis:

The GF Projects have strengthened the organizations of PLHA and their articulation.

Findings: GF Projects and PLWHA organizations

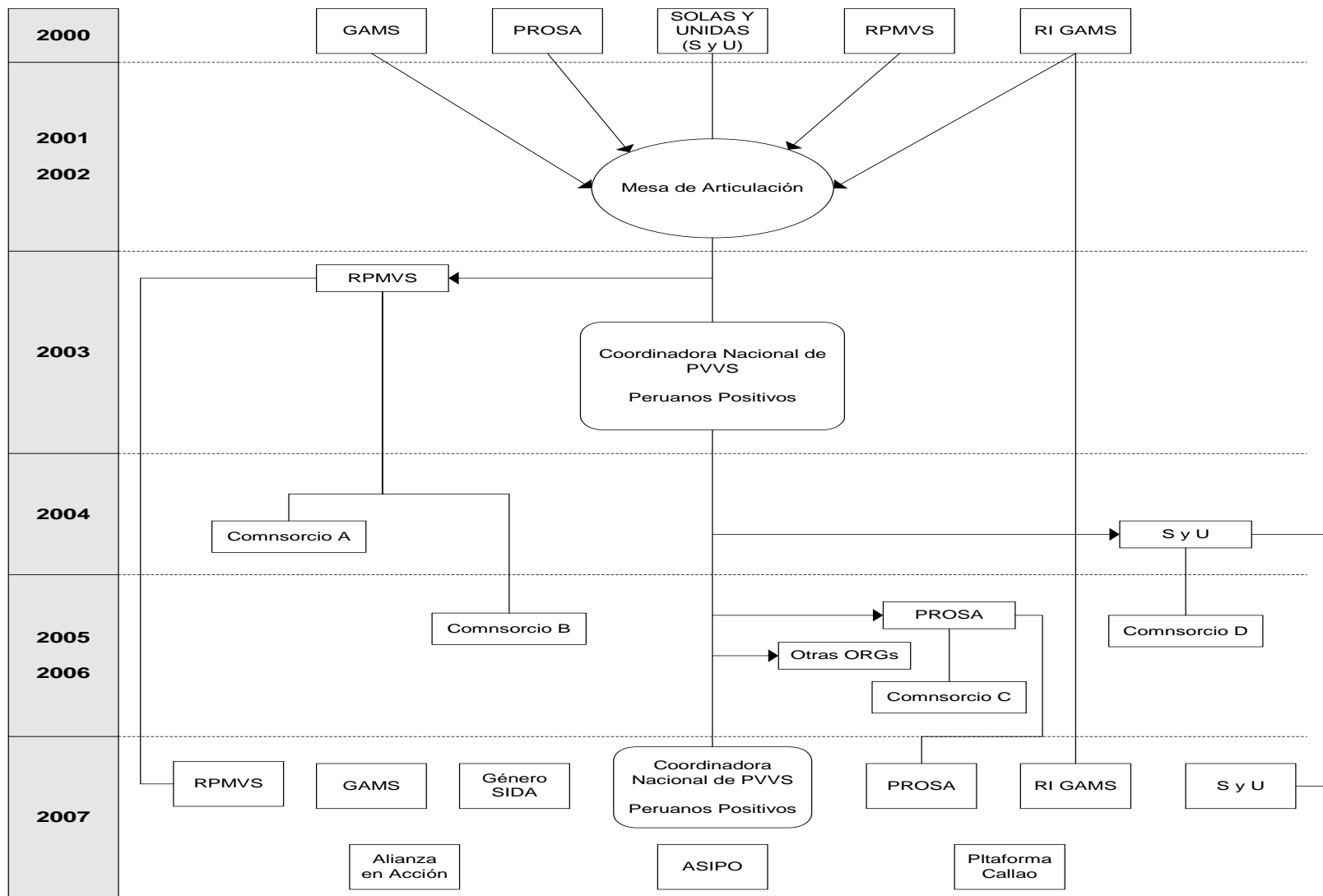
- Before de GF Projects: 2002; PLHA organizations were committed to build a National Coordinating Organization.
- After GF Projects 2003; Sub recipients had as a condition to include organizations of PLWHA to be qualified

Findings: GF Projects and PLWHA :

- Organizations of PLWHA became part of the consortiums
- Creating competition among PLWHA organizations and its leaders

Findings: GF Projects and PLWHA :

- In 2006, sixteen organizations abandoned the national coordination to be free and participate in consortiums applying to become implementers of the GF Projects.



RPMVS : Red Peruana de mujeres viviendo con VIH / SIDA
RI GAMS: Red de Información de GAMS

Conclusions

- The introduction of the GF Projects disrupt the process to articulate PLWHA organizations and made some of them focused on GF funding, directly or through the consortium.
- The Platform's demands for PLWHA were influenced by the GF Projects in the course of action and the national organization was undermined.

- ***“While the projects of the Global Fund are operating, organizations of PLHV will not be articulated”***

Mientras estén los proyectos se va a mantener una cierta desarticulación de las organizaciones[\[1\]](#) PVVS2